

Macroinvertebrate Identification Key

GROUP 1 – Very Intolerant of Pollution



Stonefly Nymph



Mayfly Nymph



Riffle Beetle
Adult & Larva



Caddisfly Larva



Dobsonfly
Larva



Water Penny Larva



Right-
Handed
Snail

must be
alive to
count

GROUP 2 – Moderately Intolerant of Pollution



Damselfly Nymph



Dragonfly
Nymph



Scud



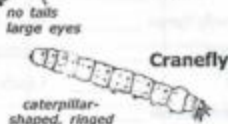
Crayfish

looks like
a mini-
lobster



Sowbug

flattened top to
bottom (looks
like a pill bug)



Crane fly

caterpillar-
shaped, ringed



Clam/Mussel

must be
alive to
count

GROUP 3 – Fairly Tolerant of Pollution



Midge
Larva

small, but
visible head
intense wiggler



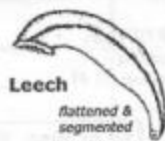
Planaria

2 eye spots
& very small



Black Fly Larva

one end is
swollen



Leech

flattened &
segmented

GROUP 4 – Very Tolerant of Pollution



Aquatic Worms

segmented
"earthwormy"



Left-
Handed
Snail

must be
alive to
count



Rat-tailed
Maggot



Blood Midge
Larva

bright red